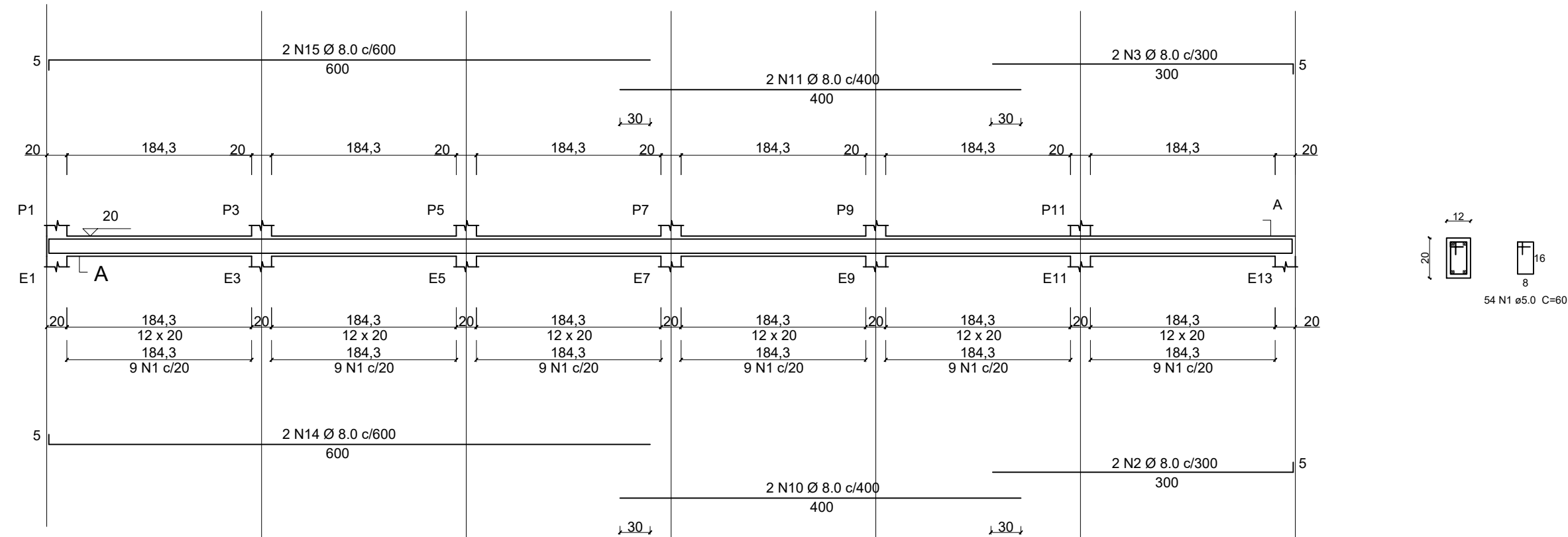
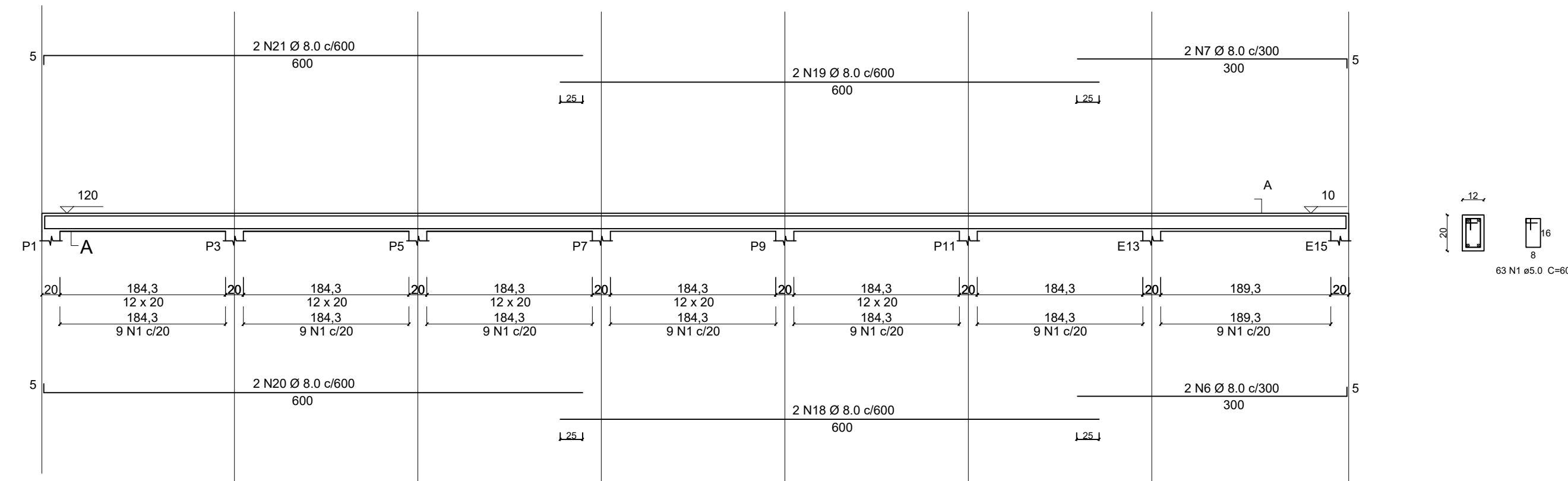


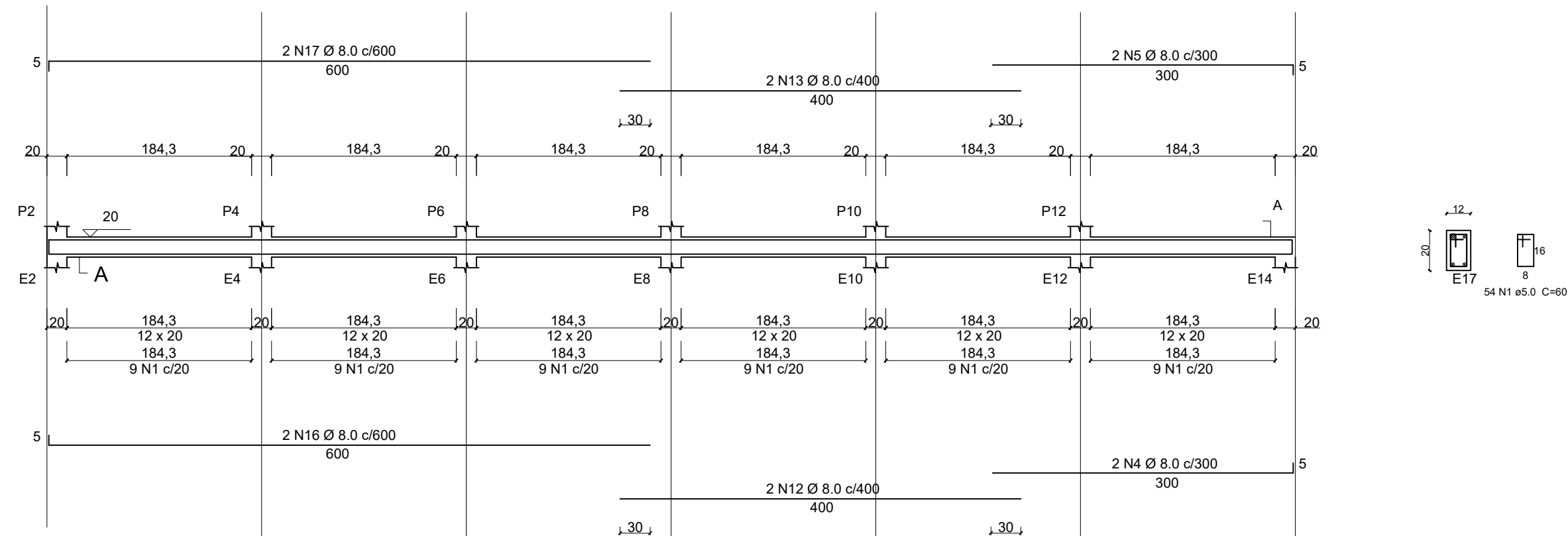
VB1



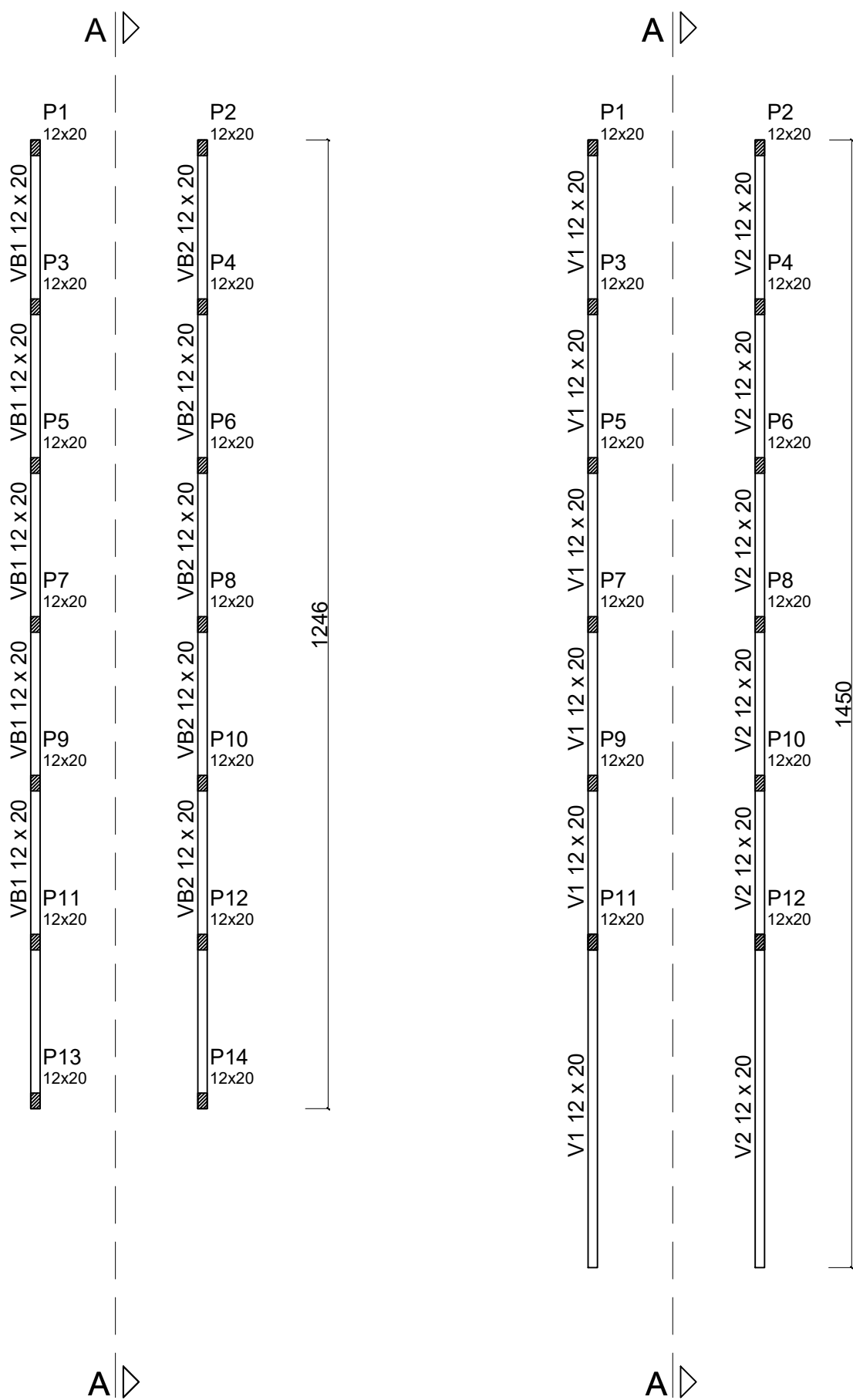
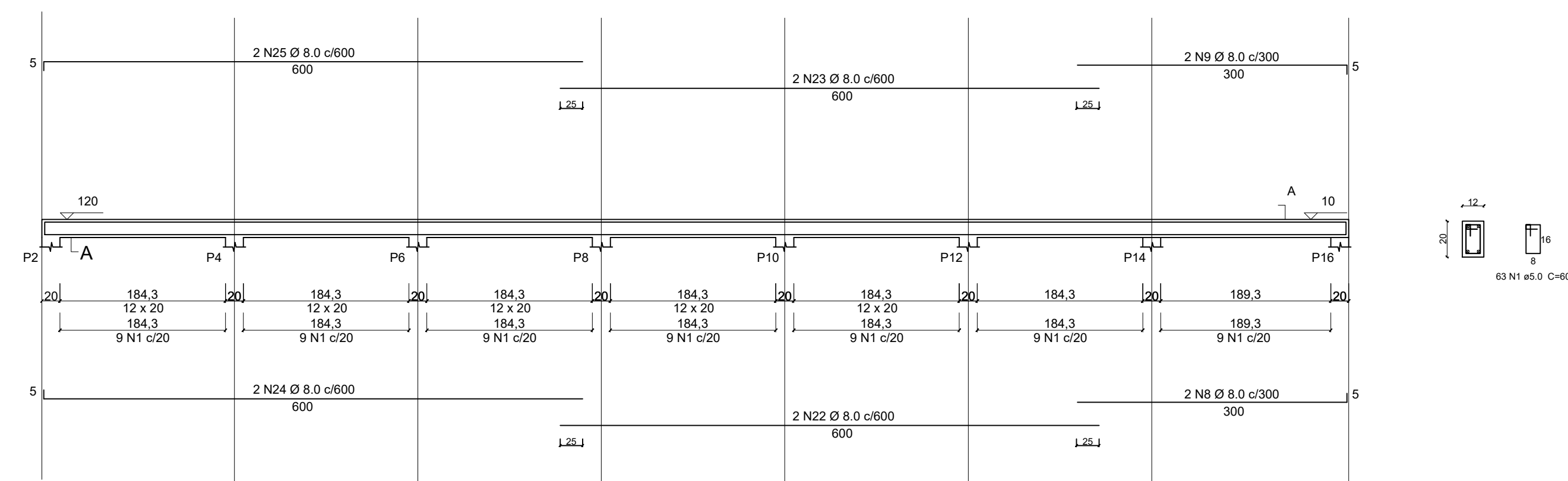
V1



VB2



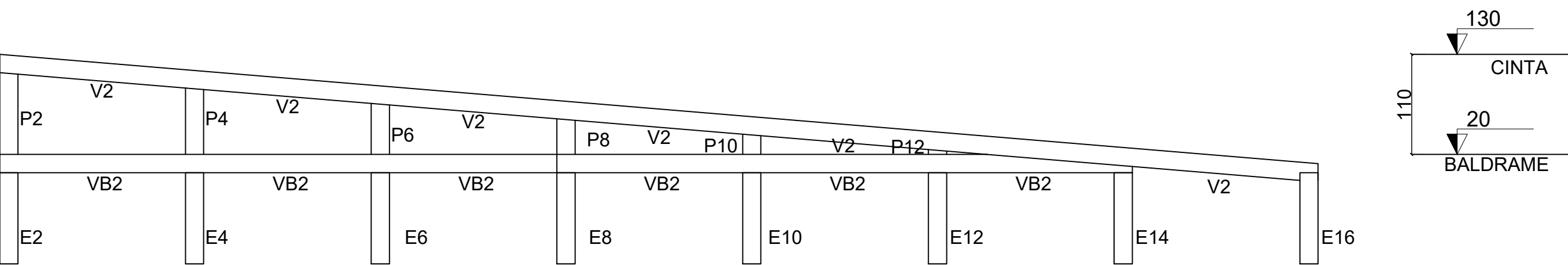
V2



AÇO	N	DIAM (mm)	QUANT (Barras)	UNIT (cm)	C.TOTAL (cm)
CA60	1	5.0	234	60	14040
CA50	2	8.0	2	300	600
	3	8.0	2	300	600
	4	8.0	2	300	600
	5	8.0	2	300	600
	6	8.0	2	300	600
	7	8.0	2	300	600
	8	8.0	2	300	600
	9	8.0	2	300	600
	10	8.0	2	400	800
	11	8.0	2	400	800
	12	8.0	2	400	800
	13	8.0	2	400	800
	14	8.0	2	600	1200
	15	8.0	2	600	1200
	16	8.0	2	600	1200
	17	8.0	2	600	1200
	18	8.0	2	600	1200
	19	8.0	2	600	1200
	20	8.0	2	600	1200
	21	8.0	2	600	1200
	22	8.0	2	600	1200
	23	8.0	2	600	1200
	24	8.0	2	600	1200
	25	8.0	2	600	1200

Resumo do aço viga			
AÇO	DIAM (mm)	C.TOTAL (m)	PESO + 10 % (kg)
CA50	8.0	224.0	97.4
CA60	5.0	140.4	23.78
PESO TOTAL (kg)			
CA50		97.4	
CA60		23.78	

Volume de concreto (C-25) = 2.5 m³
Área de forma = 22.00 m²



CORTE A-A
Escala - 1/50

MUNICÍPIO DE RENASCENÇA - PR		
RUA GETÚLIO VARGAS, 901 - FONE: (046) 3550-8300 - CEP: 85.610-000		
ADMINISTRAÇÃO	RESP. TÉCNICO	PRANCHA
IDALIR JOÃO ZANELLA PROFESSOR	ENG. CIVIL JOÃO PAULO BASNIAR BOESE CREA-PR 1245710	02/02
OBRA	PROJETO	EST. RAMPA
AMPLIAÇÃO DE COBERTURA - ESCOLA IDA KUMMER	ÁREA	420.40 m²
ESPECIFICAÇÕES	DATA	OUTUBRO/2022
LOCAÇÃO BALDRAME TAB. DE AÇO BALDRAME E CINTA TAB. DE AÇO BALDRAME E CINTA CORTE A-A	COTE	CH 49
LOCAL	ESCALAS	Indicada
RUA COSTA E SILVA	ESTADO	PARANÁ
MUNICÍPIO	RENASSENÇA	DESENHISTA