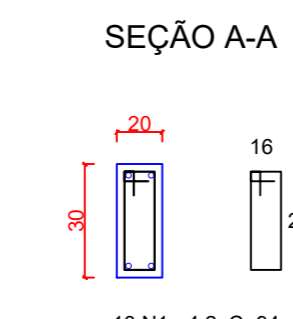
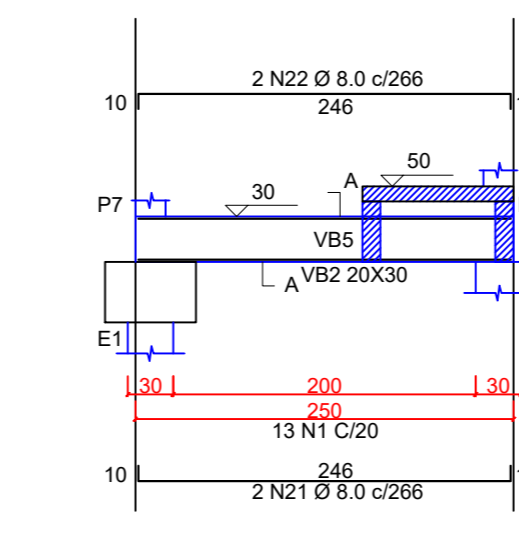
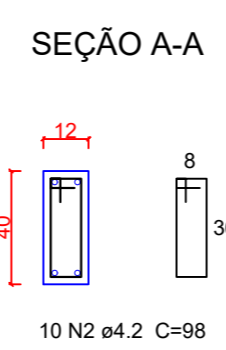
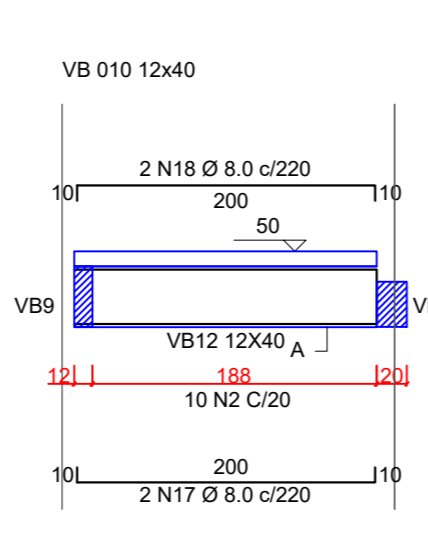
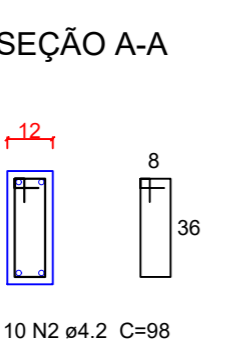
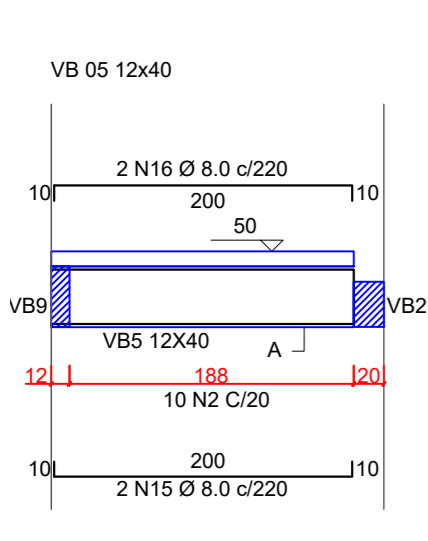
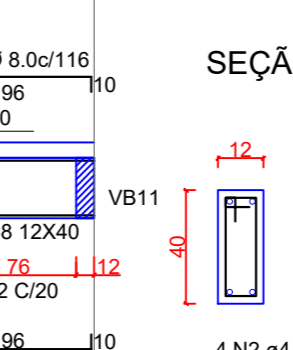
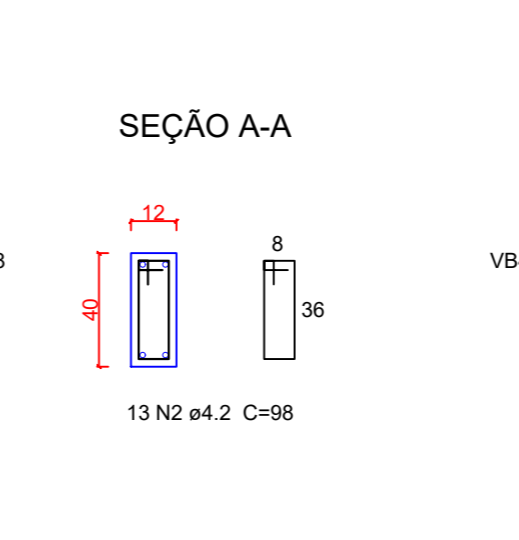
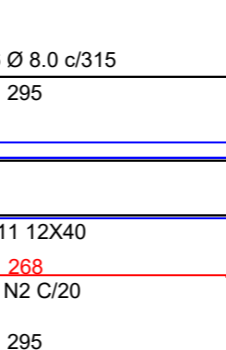
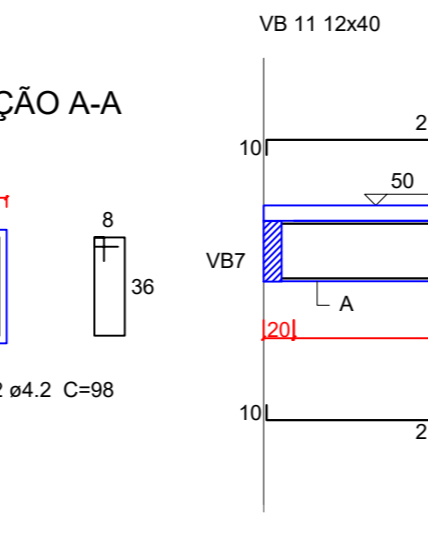
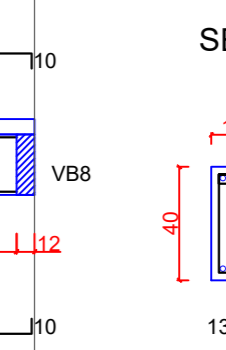
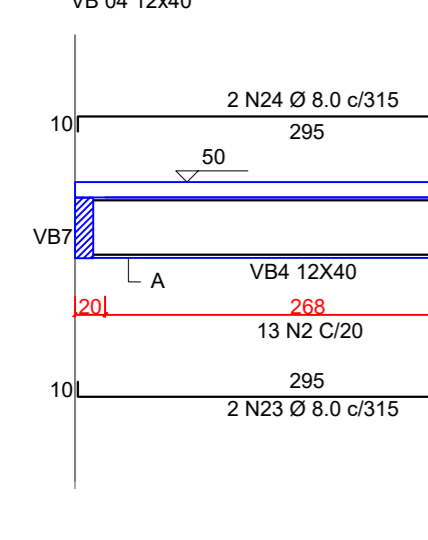


AÇO	N	DIAM (mm)	QUANT (BARRAS)	UNIT. (cm)	C. TOTAL (cm)
CA60	1	4.2	26	94.0	2444
CA50	2	4.2	82	98	8036
	3	8.0	2	116	232
	4	8.0	2	116	232
	5	8.0	2	116	232
	6	8.0	2	116	232
	7	8.0	2	116	232
	8	8.0	2	116	232
	9	8.0	2	116	232
	10	8.0	2	116	232
	11	8.0	2	220	440
	12	8.0	2	220	440
	13	8.0	2	220	440
	14	8.0	2	220	440
	15	8.0	2	220	440
	16	8.0	2	220	440
	17	8.0	2	220	440
	18	8.0	2	220	440
	19	8.0	2	266	532
	20	8.0	2	266	532
	21	8.0	2	266	532
	22	8.0	2	266	532
	23	8.0	2	315	630
	24	8.0	2	315	630
	25	8.0	2	315	630
	26	8.0	2	315	630



RESUMO DE AÇO BALDRAME			
AÇO	DIAM (mm)	C. TOTAL (m)	PESO + 10% (Kg)
CA50	8.00	100.2	43.6
CA60	4.20	104.8	12.6
PESO TOTAL (kg)		Área de forma = 14.2m ² Volume de concreto (C-25) = 1.5 m ³	
CA50	43.60		
CA60	12.60		



RESUMO DE AÇO BALDRAME			
AÇO	DIAM (mm)	C. TOTAL (m)	PESO + 10% (Kg)
CA50	8.00	100.2	43.6
CA60	4.20	104.8	12.6
PESO TOTAL (kg)		Área de forma = 14.2m ² Volume de concreto (C-25) = 1.5 m ³	
CA50	43.60		
CA60	12.60		

MUNICÍPIO DE RENASCENÇA - PR
RUA GETÚLIO VARGAS, 901 - FONE: (046) 3550-8300 - CEP: 85.610-000

ADMINISTRAÇÃO	RESP. TÉCNICO	PRANCHA
IDALIR JOÃO ZANELLA PREFEITO	ENG. CIVIL JOÃO PAULO BASNIAK BOESE CREA-PR 134576/D	02/04
OBRA		PROJETO
ABRIGOS DE PASSAGEIROS		ESTRUTURAL ABRIGO GINÁSIO MARIO NARDI
ESPECIFICAÇÕES		ÁREA
PLANTA DE VIGA BALDRAME DETALHAMENTO BALDRAME RESUMO AÇO VIGAS BALDRAMES RESUMO CONCRETO VIGA BALDRAME		110 m ²
LOCAL		DATA
RUA MARECHAL FLORIANO PEIXOTO		ABRIL/2024
MUNICÍPIO	ESTADO	LOTE
RENASCENÇA	PARANÁ	1
		QUADRA
		33
		ESCALAS
		Indicada
		DESENHISTA